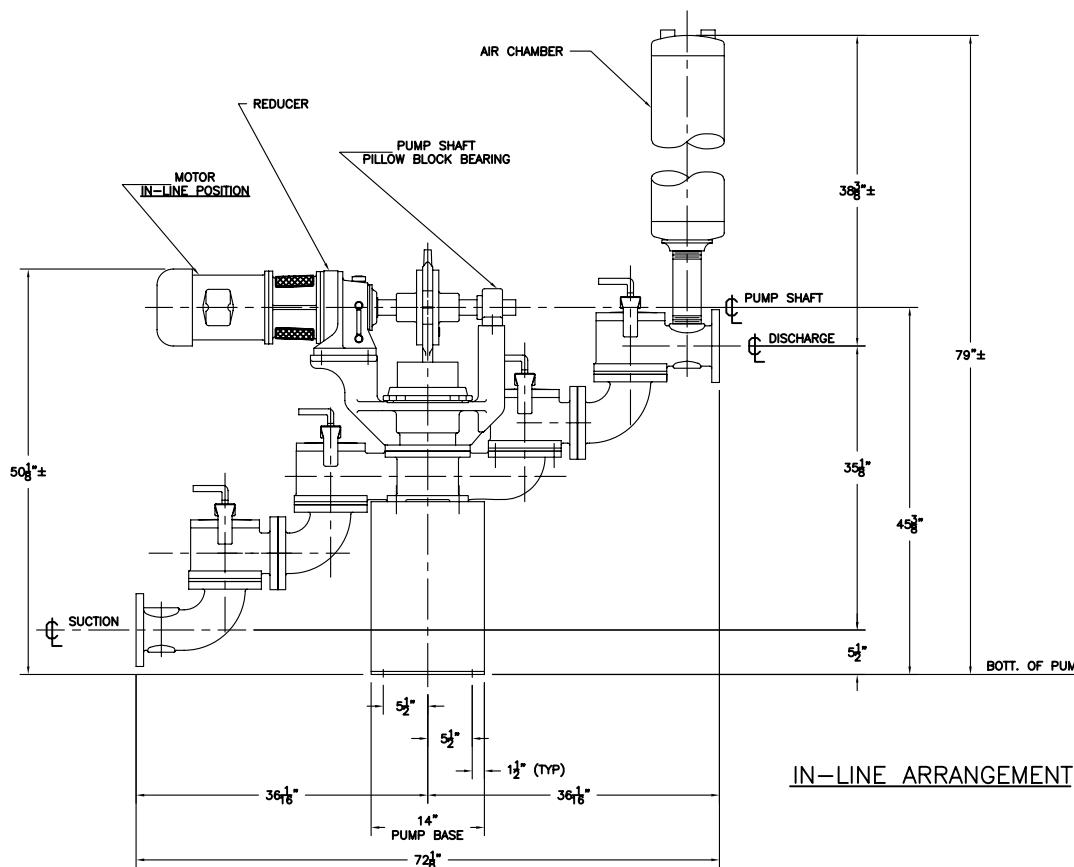


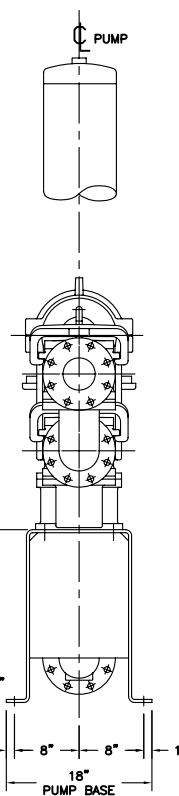
PLAN



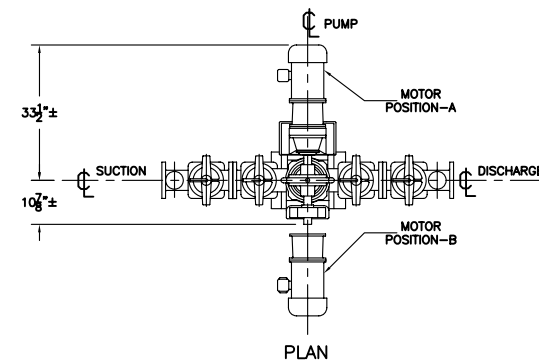
SIDE ELEVATION

NOTES:

- 1 - BASIC PUMP SHOWN - SEE CERTIFIED SPECIFICATIONS FOR DESCRIPTION OF COMPONENTS, MATERIALS OF CONSTRUCTION AND OPTIONAL ACCESSORIES FURNISHED BUT NOT SHOWN.
- 2 - SUPPORTS FOR SUCTION AND DISCHARGE PIPING NOT BY KSEC. DO NOT HANG PIPING FROM PUMP.
- 3 - SUCTION AND DISCHARGE CONNECTIONS: 4" - 125 LB. STD. A.S.A. DRILLING.
- 4 - ANCHOR BOLTS NOT BY KSEC UNLESS NOTED ON SPECIFICATION SHEET.
- 5 - OPTIONAL SUCTION AIR CHAMBER AVAILABLE UPON REQUEST.
- 6 - OPTIONAL 2" DISCHARGE SAMPLING VALVE AVAILABLE UPON REQUEST.

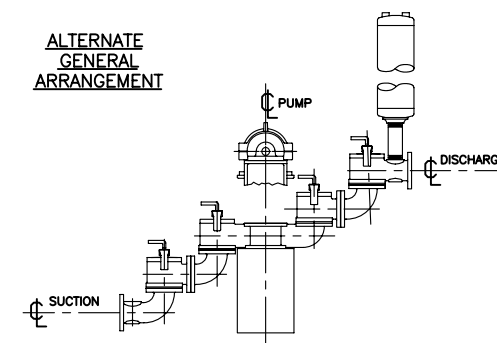


FRONT ELEVATION



PLAN

ALTERNATE GENERAL ARRANGEMENT



ELEVATION

ACAD RESCALE FACTOR 2.0

<small>THIS DRAWING REPRESENTS THE DESIGN AND ENGINEERING EFFORTS OF THE KOSLINE-SANDERSON ENGINEERING CORPORATION, IT IS LOANED TO YOU FOR YOUR USE ONLY AND IS NOT TO BE REPRODUCED OR TRANSMITTED IN ANY FORM OR BY ANY MEANS, ELECTRONIC OR MECHANICAL, INCLUDING PHOTOCOPYING, RECORDING, OR BY ANY INFORMATION STORAGE AND RETRIEVAL SYSTEM, WITHOUT THE WRITTEN PERMISSION OF KOSLINE-SANDERSON ENGINEERING CORPORATION.</small>			
TITLE <b>PLUNGER PUMP ASSEMBLY</b> <b>KSK 7.5 DUAL VALVE, FAB. BASE</b> <b>CONSTANT SPEED, 1.5, 2, &amp; 3HP</b>		- - -	
DESIGNED	DRAWN	CHECKED	APPROVED
DATE	KOMLINE-SANDERSON		REFERENCE
3-28-94	ENGINEERING CORPORATION		DWG. NO.
SCALE	PEAPACK, N.J.		CSK21-20001D
1 1/2"=1'-0"			SHT.
			1
			OF
			1